



IMD-300-30

Ice Maker Dispenser



Features:

- CFC-free, R-404a refrigerant
- High quality, high production capacity in less than 19" of counter space
- CFC-free foam insulation
- Produces extruded, chewable ice preferred by consumers
- Patented design - easy to perform preventative maintenance
- Ice maker uses 100% of water
- Ideal for healthcare or foodservice application

Distributed By:
Commercial Refrigeration Service, Inc.
WWW.IceCubes.NET
WWW.CorneliusParts.COM
(866) Ice Makers
(623) 869-8881



Technical Specifications:

Cube size: 3/8" (9 mm) W x 1/2" (13 mm) H x 1/2" (13 mm) D

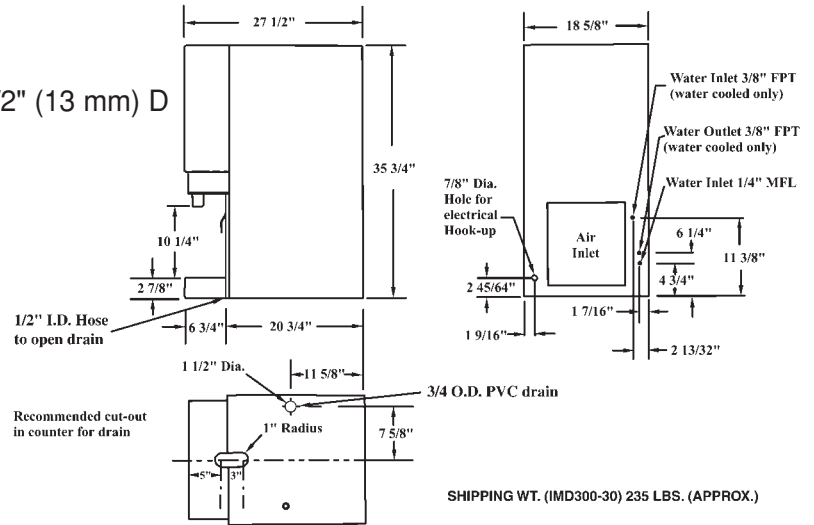
Compressor: 1/2 H.P.

Refrigerant: CFC-Free, R-404a

Ice Bin Storage Capacity: 30 lbs. (14 kgs.)

Ice Production Capacity (60 cycle):

360 lbs. @70°F Air/50°F Water
 (111.68 kg @21.1°C Air/10.0°C water)
 301 lbs. @90°F Air/70°F Water
 (136.53 kg @32.2°C Air/21.1°C water)
 (50 cycle produces 83% of above stated production capacities)



Cabinet Construction: Stainless steel

Dimensions:

18 5/8" (47.31 cm) wide
 27 1/2" (69.85 cm) deep
 35 3/4" (90.81 cm) high

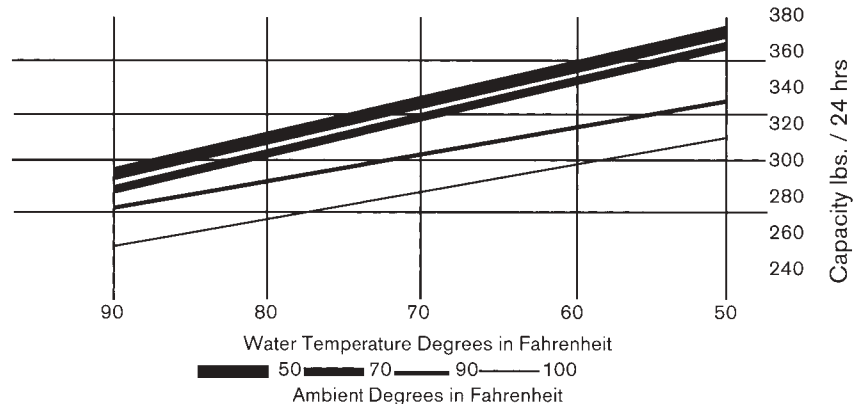
Minimum Circuit Amps: 15

Shipping Weight: 235 lbs. (107 kgs.)

Agency Listings



ICE MAKING CAPACITIES



Part Number	Model Number	Dispensing Method	Standard Electrical	Condenser	Production 70°/50° lbs./kgs.
638090500	IMD-300-30ASLA	Lever	115 / 60 / 1	Air	360 lbs. / 163 kgs.
638090501	IMD-300-30ASPB	Push button	115 / 60 / 1	Air	360 lbs. / 163 kgs.
638090502	IMD-302-30ASLA	Lever	220-240 / 50 / 1	Air	300 lbs. / 136 kgs.
638090503	IMD-302-30ASPB	Push button	220-240 / 50 / 1	Air	300 lbs. / 136 kgs.



For more information or to place an order, contact your sales representative or authorized distributor.

In the US

Phone 800-238-3600
 Fax 800-258-0255

Outside the US

Phone 763-421-6120
 Fax 763-422-3297